



PUT MY EXPERTISE TO WORK FOR YOU!

Cathy Hunnicutt
765.618.9394



RE/MAX
REALTY ONE

Spring has Sprung

Are you ready for a change?

Let Me Help You Find Your New Nest

AREA DEATHS - inside

In God We Trust

Thursday, April 2, 2026

Oak Hill Times



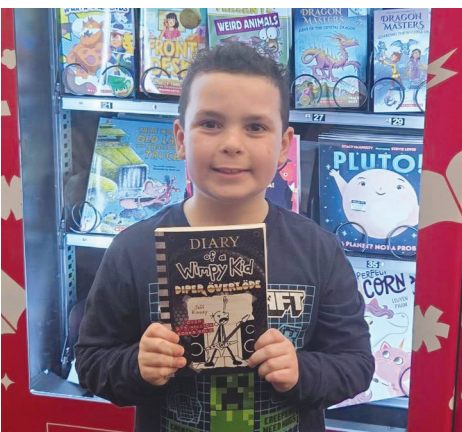
Photos courtesy of Town of Sweetser FB page

Tokens of Kindness



Kindness was in full bloom at Oak Hill! These students- and many others- turned in their Tokens of Kindness at the Book Nook to kick off spring break.

Photos courtesy of Oak Hill Elementary PTO FB page



Swayzee Town Rummage Sales
Fri, June 5 & Sat, June 6, 2026
Visit Swayzee Rummage on Facebook

Town of Sweetser awarded funding through OCRA

Sweetser, IND — The Town of Sweetser recently announced that it has been awarded funding through the Indiana Office of Community and Rural Affairs (OCRA), marking a significant milestone in the Town's ongoing infrastructure improvement efforts.

The announcement was delivered by OCRA Northeast Community Liaison Lindsey Hammond, alongside Lori Goss-Reaves, State Representative for District 31, and State Senator Nick McKinley for District 17. Their participation underscored the importance of continued investment in rural Indiana communities like Sweetser.

This award represents months of planning, engineering review, financial coordination, and public engagement focused on strengthening

Sweetser's long-term sustainability. The funding will support critical upgrades to the Town's sanitary sewer infrastructure — a large-scale project designed to bring Sweetser's system up to modern standards and ensure reliable service for decades to come.

Sweetser Town Council President Kyle A. Taylor stated, "These funds will make a tremendous impact on the sustainability of our massive infrastructure project. Bringing Sweetser's sanitary system up to today's standards ensures we can properly serve our residents not just now, but for decades to come. This investment strengthens the foundation of our community's future."

Town officials extend a special thank you to residents who participated in public surveys and community forums.

Community input played a vital role in shaping the direction and priorities of this project. The Town Council also recognizes the many long evenings spent working through planning details to ensure the project met both community needs and funding requirements.

The Town expresses its appreciation to RQAW/DCCM for their work on the preliminary engineering phase and to Kleinpeter Consulting Group, LLC for their guidance throughout the grant application process. Their expertise and partnership were instrumental in securing this funding.

With this award, Sweetser takes a significant step forward in modernizing its infrastructure and continuing to build a strong, sustainable future for its residents.

Grant program available to protect private forestland from development

NASHVILLE — The Tennessee Department of Agriculture Division of Forestry (TDF) announces the

application period is open for a special round of Forest Legacy Program (FLP) funding made available to landowners to protect privately owned forested land from development.

"As conversion of forested land for development increases in Tennessee, the need to conserve critical woodlands grows," State Forester Heather Slayton said. "This program helps put long-term conservation within reach for more Tennesseans, helping to ensure that future

generations will have access to the many benefits sustainably managed forests provide, including a thriving forest industry, clean air and pure water."

FLP is a conservation program administered by the U.S. Forest Service in partnership with TDF to protect privately owned forest lands from conversion to non-forest uses through conservation easements or land purchases. Federal grant funds pay for conservation easements that restrict development

and allow landowners to continue to own and manage their land.

Applications should be submitted by 4:30 p.m. Central time on May 22, 2026.

The request for proposal package and more information about Tennessee's FLP are available at the Forest Legacy Program webpage. For questions, contact TDF's Landscape Conservation Program Specialist Allana Funderburk at allana.funderburk@tn.gov.

FLP in Tennessee currently conserves

more than 58,000 acres valued at more than \$59 million across the state. Conserving and managing forested land in Tennessee contributes to improved water and air quality, fosters fish and wildlife habitat, provides sustainable timber and other forest products, and offers recreation opportunities.

TDF protects Tennessee's forests by fighting wildland fires, coordinating hazard emergency response, providing wildland fire training, and offering prescribed fire guidance and

services. The division promotes the responsible use of forest resources by providing technical and financial assistance to landowners, cultivating quality seedlings, monitoring insects and diseases, improving urban forests, managing state forests, protecting water quality, and collecting forest inventory data. TDF also promotes forest industries to stimulate the state's economy. Visit the Tennessee Division of Forestry webpage for more information.

VICTORIOUS *Living* ...in a troubled world

Rabbits and Easter eggs

By Teresa LeNeave
leneave2@comcast.net

What if. What if we could trust what we hear to be truth? What if there was no one trying to deceive us or confuse us? If you're like me, watching the news is stressful because you never know what's truth and what's yellow journalism.

Deception is everywhere. I guess it's always been that way because I remember Jesus saying, "Take heed that ye be not deceived" (Luke 21:3). People have struggled with being deceived from the beginning of time when Adam and Eve were deceived in the Garden of Eden.

No one means to be deceived, but you can bet there are people in this world who are intent on deceiving us.

If we read Jesus' warning in modern day language it might say: "Be careful...be careful because there are people who are constantly trying to mislead or trick you."

Be careful who and what you listen to. And this applies to all of us. If people who walked directly with God could be deceived, then we certainly are no stronger than they were.

Jesus was cautioning all of us to stay alert because there always has been, and always will

be, false teachers who claim authority or truth, but it's all a farce. Only Jesus is the Christ. He is the only one who can redeem our souls and satisfy the need for relationship with God.

He said some would even claim to be the Messiah. How bold is that and what do they have that draws people to believe such a thing?

Jesus said people need discernment that comes from God. People can easily be led astray and personally, I believe, we're all vulnerable. That's why we need to stay as close to the Word as possible. If something you hear doesn't line up with

the Bible, steer clear of it.

It's not about obvious lies (although that's a big problem in mainstream media), but it's about it's about not blindly following the crowd. Just as we align ourselves with a certain political party does not mean that we have to go along with everything they do or say. Staying grounded in truth and faith is our only hope in the world we live in today.

Jesus made it very clear that we need to pay attention, stay alert, and don't let anyone fool us.

This is Easter week and I want to emphasize how



important it is to stand on the truth of the Word: that Jesus died on the cross to forgive our sins, to set us free from sin and death, that we

might live. It's not about rabbits and Easter eggs, but it's about eternal life in a place free from pain and sorrow.

Steven Curtis and Mary Beth Chapman 'Still Here' despite marriage struggles

By Laura Erlanson,
Baptist Press

NASHVILLE (BP) – When Steven Curtis and Mary Beth Chapman got married 40-plus years ago, they knew they were opposites in many ways. After all, that was what had attracted them to each other in the first place. "You fall in love with something you are not," Mary Beth says.

What they didn't know, though, is how the differences between them would often make their marriage really, really hard.

They talk about just how hard in "Still Here: Life Together on the Long Way Home," a new book releasing March 24.

Through the winnin', losin' and tryin'

The book does not sugar coat the difficulties in their 41-year marriage. It goes into candid detail about fights, tragedies and the strain brought by Steven's career on the road.

"There are a lot of great how-to marriage

books, and all those are good and we have gleaned information from them," Mary Beth says. "But it's very important for people to know that we can't write a how-to book." She laughs. "We can write an 'in spite of' book. ...

"There's a reason we've been married 41 years. Those reasons are a lot of redos and a lot of bearing with one another in love and a lot of forgiveness."

The book's title is a play on the title of "I Will Be Here," Steven's ode to faithful marriage that became something of a wedding anthem.

He wrote the song a few years into his marriage to Mary Beth while his own parents' marriage was ending.

His mom and dad's divorce was an "earthquake," he says now.

"Wait a minute ... what do we do with this? If this happened to my parents, how do we know that this won't happen to us?"

And though it didn't happen to them, many times it seemed like it



could have.

One important practice for Steven and Mary Beth was to remember the "epic and mysterious and cosmic" nature of marriage. It's literally a picture of Christ and the Church, and Satan wants to destroy it.

"We're not fighting a battle against flesh and blood," Steven says. "Sometimes our most heated arguments end with, 'You know, I am not the enemy. You're not the enemy, but there

right," he says.

"Because we didn't marry a mom, a dad, a person who had carried the weight of providing or carried the weight of raising children and heartbreak and sadness, and parents getting older. ... Life changes us. And yet also remembering that the person that I fell in love with is still here, is still that person."

Mary Beth says her struggle has often been feeling overshadowed.

"I'm super guilty of looking at Steve going, 'OK, listen, my whole life has been about your career,'" she says, laughing. "... Well, wait a second. God called me to this marriage. You know, He's called me to bear with him in love, and Steven's been so gracious at going, 'How can I help you fulfill some of the longings in your heart?' And so it is so much giving."

We often hear that marriage is give and take, she adds.

"Well, what if marriage was all give and give and

give and give more," Mary Beth says. "And not really expect the receiving. If we were both willing to do that, I just think we would see potentially a lot of healing. And that's a hard thing to do because we are sinners and we are selfish at the core."

I will be true to the promise I have made

The Chapmans are quick to say they have sought a lot of outside help over the years.

"I guess if we've done anything well and right in this process, it has been very willing to acknowledge humbly that we don't have it figured out, that we need help," Steven says. "We need, ultimately, God's help."

And while deciding to go counseling is important and helpful, the daily decision of marriage is the real secret.

"There has to be a posture of we are both broken people living in a broken world," Mary Beth says. "How can you come together to be bearing with one another in love?"

Proof of Residence

By Brandon Bramlett
Pastor - Bandana Baptist Church

Ryegrass had sprouted in the driveway. The parking lot was void of vehicles. There were no tricycles or children's sneakers piled by the doors. The creamy white paint was chipping off the building. There were no signs of life at this apartment building. I drove there to deliver a meal that a customer ordered online. I had received an order to deliver lunch to

this address, when I was, for a brief time, employed by a food delivery service.

Upon arrival, every internal alarm sounded off—something wasn't right. Even from my vehicle, I could see an aged eviction notice fastened to the outside door. I proceeded up the rusty steps and knocked firmly on the door—nothing. Through the grimy window, I could see that the lights were off, and the television was blank. This home was hollow and

vacated—unoccupied and uninhabited. The online profile claimed that so-and-so lived at this exact residence, but the evidence contradicted the claim. There was no evidence of life—no proof of residence.

Unfortunately, many who claim to be Christians have little evidence that the Spirit of God lives in and occupies their heart. But the word of God clearly declares that when the Holy Spirit dwells within you, there is always undeniable proof of

residence. When the Spirit settles in your heart, it shows. All the signs of life are there—the lights are on, the house is clean, and maintenance work is being done. There is activity on the inside and the outside. If you truly possess the Spirit, no one can drive by the house of your life and say, "There is no proof of residence here." You might claim to be a true believer—a church membership card or Facebook profile might say so. But the claim is

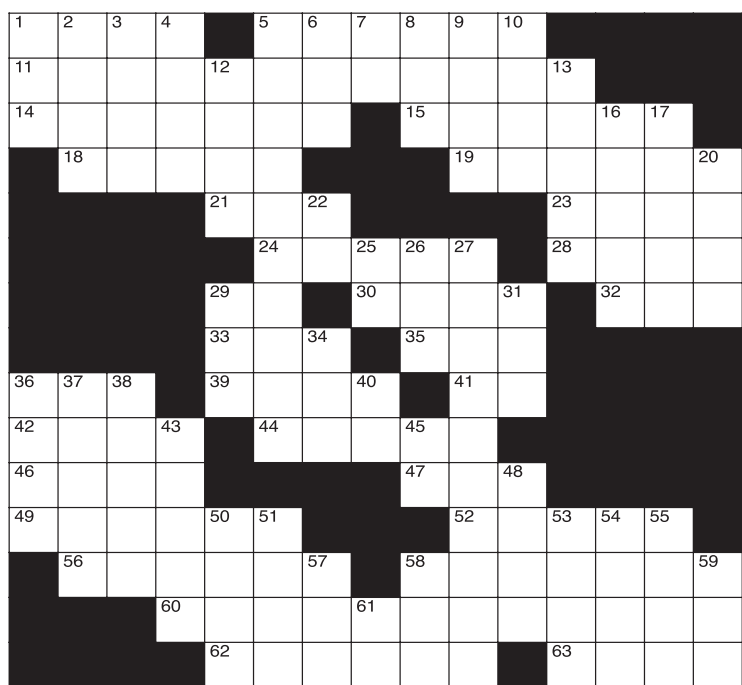
always corroborated by evidence if it is true, and if you truly possess the Spirit of God, the truth will come out.

The Spirit demonstrates proof of His residence in your heart in a variety of ways. He speaks through you (Matt. 10:20; Mark 13:11), He bears fruit (Gal. 5:22-23), He teaches you (John 16:13), He emboldens you to witness (Acts 4:31), He leads you (Rom. 8:14), He assures you of sonship (Rom. 8:16; 2 Cor 1:22; Gal. 4:6),

He gives gifts (1 Cor. 12:11), He transforms you (2 Cor. 3:18), and He helps you fight the flesh (Gal. 5:16-18).

The key, however, to the Spirit demonstrating proof of His residence in your life is by being filled with the Spirit—submitting to His influence and relinquishing control of your heart to Him: "And do not get drunk with wine, for that is debauchery, but be filled with the Spirit" (Eph. 5:18). Is there proof of His residence in your life?

Crossword Puzzle



CLUES ACROSS

- 1. Absence of difficulty
- 5. Preserve a dead body
- 11. Gratitude
- 14. The act of coming together again
- 15. More cushy
- 18. Visionaries
- 19. Large fish-eating bird
- 21. Indicates near
- 23. Former CIA and CIA critic
- 24. Icelandic poems
- 28. Pop
- 29. Hammer is one
- 30. Selfs
- 32. Thyroid-stimulating hormone
- 33. Nowhere to be found
- 35. Electronic data processing
- 36. Drivers' licenses and passports are two
- 39. Snake-like fishes
- 41. Air Force
- 42. Popular personal computers
- 44. Stages in ecological succession
- 46. Wings
- 47. In the center
- 49. Pleasantly smooth
- 52. Jeweled headdress
- 56. In slow tempo
- 58. ___ Falls
- 60. Reiterations
- 62. Eras
- 63. Hyphen

CLUES DOWN

- 1. Body part
- 2. Mimics
- 3. Expel or eject (variant sp.)
- 4. Sea eagle
- 5. Taxonomic category
- 6. Chinese languages
- 7. Mr. T's "A-Team" character
- 8. Consumed
- 9. Chinese dynasty
- 10. NFL legend Randy
- 12. Ireland
- 13. Palm trees with creeping roots
- 16. Fungal disease
- 17. Tall, slender-leaved plants
- 20. Affirmative! (slang)
- 22. It says who you are
- 25. Atlantic coast state
- 26. Grow older
- 27. Associations
- 29. Woman (French)
- 31. Sunscreen rating
- 34. Brew
- 36. Leader
- 37. Indigo bush genus
- 38. Burn with a hot liquid
- 40. Junior's father
- 43. Mackerel genus
- 45. Morning
- 48. Straight line from side to side (abbr.)
- 50. Type of molding
- 51. Small, thin or twisted bunch
- 53. Worn by exposure to the weather
- 54. Mars crater
- 55. Humanities
- 57. Relating to the ears
- 58. "To the ___ degree"
- 59. Residue when something is burned
- 61. It cools a home

PUZZLE SOLUTION

E	A	S	E	E	M	B	A	L	M						
A	P	P	R	E	C	I	A	T	I	O	N				
R	E	U	N	I	O	N	E	A	S	I	E	R			
S	E	E	R	S		O	S	P	R	E	Y				
				E	P	I		A	G	E	E				
				E	D	D	A	S	S	O	D	A			
				M	C	E	G	O	S	T	S	H			
				M	I	A	E	D	P						
I	D	S		E	E	L	S	A	F						
M	A	C	S		S	E	R	A	L						
A	L	A	E					M	I	D					
M	E	L	L	O	W			T	I	A	R	A			
A	D	A	G	I	O			N	I	A	G	A	R	A	
				R	E	S	T	A	T	E	M	E	N	T	S
				E	P	O	C	H	S		D	A	S	H	

Crypto Fun



Solve the code to discover words related to fishing. Each number corresponds to a letter. (Hint: 1 = A)

- A. 15 21 1 4**
Clue: Rides on water
- B. 9 1 4 9 7**
Clue: Nab
- C. 15 1 3 4**
Clue: Lures in
- D. 2 3 18 19 20 5**
Clue: Heavy item

Answers: A. boat B. catch C. bait D. sinker

Word Search

LOVE FISHING WORD SEARCH

U G T T I T P G O T L T A C K L E B I E
 O P E D E M T H B S U I E J G E S U S M I
 W N R R G N N G R K U M G B T M A L F I
 A B M A A J N E F R U R F K I R H E C F F
 L P I G B E K J B N I A I I T L S T F G
 B T N F P N N G F K F N K I E S G R S S
 S F A I S T J N B E D E S R A A I L I G
 H I L S I D P I J D T F I R R R T G E S
 A K N H R I A L E L J I G G T I N G L O J
 S O W I S N S L I T H A H C T I A C S O R
 A O S N B F D O D E G G N I M M U H C O
 N H F T G U O B R K M C M F N B P T I M J
 G O J F T N O S T R U C T U R E O S G F E
 L H M T W I H I K A U K J E O P B D F I
 E P P T K S N R H R E D A E L T H B O H
 R B G T L K I W M P N E E G O F T N E T
 A P E W M P J G A S B E E B A W S S H R
 D O A G B A I T H P M D S A L W A B B G
 J J I U C D G W U T S H D R H G C T F L
 U P S G F W T E R U L N R M B B K K L

Find the words hidden vertically, horizontally, diagonally, and backwards.

ANSWERS ON THE CLASSIFIED PAGE

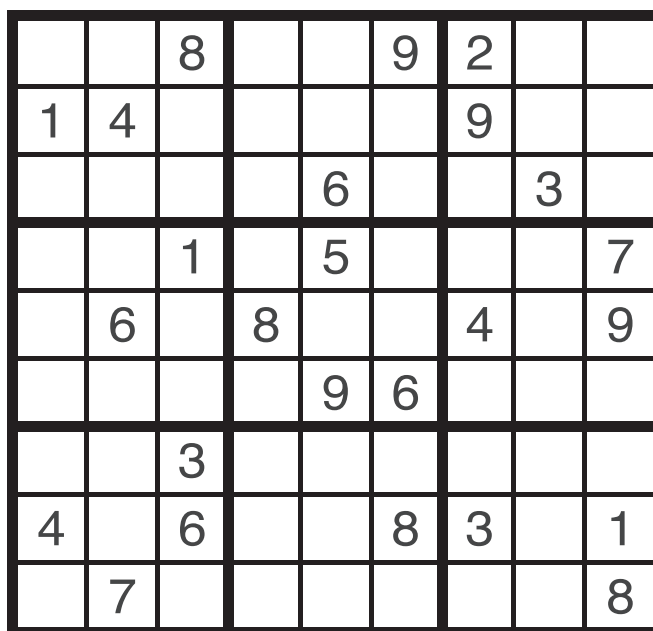
WORDS

- ANGLER
- BAG
- BAIT
- BOBBER
- CAST
- CATCH
- CHUMMING
- DRAG
- FISHING
- HOOK
- JIGGING
- LEADER
- LIMIT
- LURE
- RELEASE
- SIGHT
- SINKER
- SKUNKED
- SPAWNING
- STRIKE
- STRUCTURE
- TACKLE
- TERMINAL
- TROLLING

Sudoku Puzzle

How it Works:

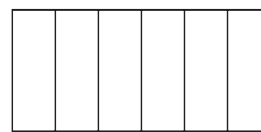
Sudoku puzzles are formatted as a 9x9 grid, broken down into nine 3x3 boxes. To solve a sudoku, the numbers 1 through 9 must fill each row, column and box. Each number can appear only once in each row, column and box. You can figure out the order in which the numbers will appear by using the numeric clues already provided in the boxes. The more numbers you name, the easier it gets to solve the puzzle! Good Luck! **ANSWERS ON THE CLASSIFIED PAGE**



Word Scramble

Rearrange the letters to spell something pertaining to fishing.

TCKAEL



Answer: Tackle

Guess Who?

GUESS WHO?

I am an actress born in Florida on April 2, 2002. One of my earliest roles was in the television series "The Glades," and I've had a few roles in films. These days I can be found "wolfing out" in a popular Netflix series opposite my macabre roommate.

Answer: Emma Myers

COLORING FUN



April Jokes

How do you get a tissue to dance?
Put a little boggie in it.

Why did the robber take a shower?
He wanted a clean get away.



Rev. Jay E. DeNeff

Jay Edwin DeNeff passed away on March 27, 2026. The family will receive visitors from 11:00 am to 1:00 pm on Wednesday, April 1, 2026, at College Wesleyan Church, 200 E. 38th St., Marion, IN. Immediately following the time of visitation, a service to celebrate Jay's life will begin at 1:00 pm with Rev. Steve DeNeff officiating. Burial will take place at Grant Memorial Park. Arrangements have been entrusted to Needham-Storey-Wampner Funeral & Cremation Service, North Chapel 1341 N. Baldwin Ave., Marion, IN.

William Newton Small

William Newton Small, 90, Marion, passed away at 12:48 am on Thursday, March 26, 2026 at Marion Health in Marion. A Graveside Service to celebrate Bill's life was held at 11:00 a.m on Monday, March 30th at Marion National Cemetery where burial will follow. Memories may be shared online at www.nswcares.com.

Marlene Meeks

Marlene Kay Meeks, age 76, went to be with her heavenly Father on Tuesday, March 24, 2026, passing away peacefully at her home surrounded by her family. Marlene was a member of Grace Community Church and her life will be honored there from 1pm to 3pm on what would be her 77th birthday-April 12, 2026. Please join her family in celebrating a life well lived. Grace Community Church, 1810 E Bradford Pike, Marion, IN 46952. Arrangements are entrusted to Needham-Storey-Wampner Funeral & Cremation Service, North Chapel, 1341 N. Baldwin Ave., Marion, IN.

Georgiana Jane Pearson

Georgiana Jane Pearson, a devoted production worker at RCA for an impressive forty-four years, passed away peacefully on March 27, 2026, in Jonesboro, Indiana. Services to honor Georgiana's life will be held on April 3, 2026, at the Raven Choate Robinson Funeral Home located at 1202 West Kem Road, Marion, Indiana 46952. Visitation will take place from 10:00 a.m. until 11:00 a.m., followed by the funeral service from 11:00 a.m. to 12:00 p.m.

Joseph E. Sambaugh

Joseph E. Sambaugh, a dedicated Maintenance Technician at Essex Wire who devoted thirty-eight years to his career, passed away peacefully on March 25, 2026, in Marion, Indiana. A visitation to honor Joseph's life will be held on April 2, 2026, from 11:00 a.m. to 1:00 p.m. at Raven Choate Robinson Funeral Home, located at 1202 West Kem Road in Marion, Indiana. Pastor Andrew Morrell will officiate. Following this, a funeral service will take place at the same location at 1:00 p.m.

Joan Louise Brown

After a life rich in love, family, and purpose, Joan Brown passed away on March 23, 2026, at the age of 101. There will be a private family burial in Caldwell, Ohio. The family will receive friends on April 18, 2026, at 2:00 p.m. at the Hostess House, 723 W. 4th Street,

Marion, a place Joan loved and supported. A celebration of a life well lived will take place.

Timothy John Dayton

Timothy John Dayton, a man cherished for his humor, loving nature, and unyielding dedication, passed away peacefully on March 22, 2026, in Marion, Indiana. A visitation will be held on April 1, 2026, from 4:00 PM to 6:00 PM at the Raven Choate Robinson Funeral Home, located at 1202 West Kem Road, Marion, Indiana 46952. This will be followed by a Celebration of Life from 6:00 PM to 7:00 PM at the same location, where family and friends will gather to honor and remember the remarkable life of Timothy Dayton. Pastor Matthew Trexler will officiate.

Pauline Myers Rhine

Pauline (Miller) Myers Rhine, 97, of Bunker Hill, passed away at 3:30 PM, Thursday, March 26, 2026, at Wellbrooke of Kokomo. A service celebrating the life of Pauline Myers Rhine will be held at 11:00 AM, Wednesday, April 1, 2026, at Howard-Miami Church, 3976 E 1400 S, Kokomo, with Pastor Matt Stewart officiating. Burial will be in the Mast Hensler Cemetery. Family and friends will gather for visitation from 4:00 – 8:00 PM, Tuesday, March 31, 2026, at the church.

Billie L. (Cunningham) Bowman

Billie L. Bowman, 84, of Amboy, passed away on March 24, 2026. Graveside Services celebrating the life of Billie L. Bowman, will be held at 11:00 A.M, Saturday, April 11, 2026, at Park Lawn Cemetery with Pastor Randy Smoot officiating.

Michael A. VanGordon

Michael "Mike" Arlo VanGordon, 63, passed away on March 26, 2026 at his residence. Funeral service will be Friday, April 3, 2026 at Keplinger Funeral Home, 509 N. High St., Hartford City with Pastor Kevin Lex officiating. Burial will follow at Hartford City Cemetery. Visitation will be on Thursday, April 2, 2026 from 4 to 8 pm and from 9 to 11 am Friday, April 3, 2026 at Keplinger Funeral Home.

Robert Cook

Robert "Bob" Cook, 96, passed away peacefully on March 25, 2026 in Martinsville, Indiana surrounded by his loving family. Graveside service will be at 3 pm Thursday, April 2, 2026 at Hartford City Cemetery. Keplinger Funeral Home is in charge of arrangements.

Greg Alan Robinson

Greg Alan Robinson, 66, passed away on March 24, 2026 at his residence. Greg's wishes were to be cremated and a celebration of life service will be at 6 pm Wednesday, April 1, 2026 at Keplinger Funeral Home, 509 N. High St., Hartford City with Pastor Troy Kaufman officiating. Memorial visitation will be from 4 to 6 pm Wednesday, April 1, 2026 at the funeral home.

To place a full obituary, including a photo, call 270-442-7389 for details and pricing. Obituaries and funeral notices should be received by 9 a.m. Tuesday for inclusion in that week's paper.

REGIONAL CHURCHES DIRECTORY

Liberty Baptist Church

517 Church St, Sweetser, IN 46987
<https://www.libertyfamily.org>
 (765) 384-7004
 Sunday School - @ 9:00 AM
 Worship - @ 10:00 AM
 Sunday Evening - @ 6:00 PM
 THURSDAYS
 Classes @ 5:30 & 6:30 PM

Sweetser United Methodist Church

413 N. Main Street, Sweetser, IN 46987
www.sweetserumc.org
 (765) 384-7354

Swayzee United Methodist Church

306 S Washington St, Swayzee, IN, United States, 46986
www.umc.org
 (765) 922-7223

Converse Church of Christ

301 E. Wabash Street Converse, IN 46919
 765-395-3361
 First Hour service (traditional) @ 9am
 Second Hour service (contemporary) @ 10:15am

Sweetser Wesleyan Church

(765) 384-7232
 200 West Delphi Pike Sweetser, IN 46987
[www.https://www.sweetserwesleyan.org](http://www.sweetserwesleyan.org)
 Sunday Morning 10 am

Back Creek Friends

– 10:30 a.m., Sunday School – 9:30 a.m.

Back Creek Wesleyan

– 10:30 a.m., Sunday School – 9:30 a.m.

Fairmount Baptist Church

– 10:30 a.m., Sunday School – 9:30 a.m.

Fairmount Church of God

– 10:30 a.m., Sunday School – 9:30 a.m.
 Fairmount Friends – 10:30 a.m.

Fairmount Wesleyan

– 9:30 a.m. Fairmount United Methodist – 9:30 a.m.

Fowlerton United Methodist

– 10:45 a.m. Grant Church (Global Methodist) 11018 S 300 E Fairmount 9:00 a.m.

Jones Chapel

– 10:30 a.m., Sunday School – 9 a.m. MorningStar Ministries, 11:00 a.m. (Jonesboro)

Prince of Peace Lutheran Church

– 9 a.m. (Hartford City)

One of Ten Ministries and Church

– 10:30 a.m. Pilgrim Holiness – 6 p.m.

Real Community Covenant Church

– 10 a.m. – 1240 S. Adams in Marion

Westview Wesleyan

11 a.m. (Jonesboro) Women of Hope Bible Study – Tuesday – 10 a.m. (Located at One of Ten on SR 26 in Fairmount. Open to all women in Grant County)

Fairmount UMC

– Monday – 7 p.m. – Campus Life

Fairmount UMC

– Wednesday – 10 a.m., Men and Women's Bible Study

To be included in the Church Directory: Email your Church Name - Church Address - Service Times to pamela.kpi2018@gmail.com *Deadline is Monday at 5 PM for the Thursday edition. Email any changes to same email address

Upcoming Events

Submitted by Catherine Lamb

Community Breakfast – Masonic Lodge #635, Saturday, (biweekly), freewill donation

Hope Center – Every Friday, 1 p.m. – 4:30 p.m.

Fairmount Town Council – Biweekly at 6 p.m.

Feeding Fairmount Ministry – 2nd Monday of month – Fairmount UMC, freewill donation, 12 noon

Blackford County Extension - April 14: April District Meeting in Hartford City, "As American As Apple Pie"

Blackford County Extension - May 7: Achievement Day which includes recognition of perfect attendance, membership milestones, new members & Memorial for deceased members.

The Health Board meeting that was originally scheduled to be held on Monday, March 23rd has been changed to Monday, April 6th.

The meeting will take place at 5pm in the Grant County Council Chambers.

SQUIRREL CREEK Bulk Foods

PRICES GOOD THRU MARCH 19TH-APRIL 2ND WHILE SUPPLIES LAST

PAN ROASTED TURKEY BREAST \$5 ⁹⁵ lb.	ROAST BEEF \$7 ⁷⁵ lb.
SPICY PINEAPPLE HAM \$4 ⁴⁹ lb.	PEPPER JACK CHEESE \$2 ⁹⁹ lb.
SHARP CHEDDAR CHEESE \$4 ²⁵ lb.	

574-893-1942
 13653 N 500 E Roann-Miami County
 Hours: Mon-Sat 8-30-5-00

we treat people like people. because, they're people. simple human sense

NORRIS INSURANCE
"We'll Come Running!"

Kirk Hornocker
 Insurance Agent

Swayzee, IN • 765.922.4449
NorrissInsurance.com

Auto-Owners INSURANCE

The origins on Easter Sunday

Easter takes place on a different Sunday each year. In western Christianity, Easter follows the Gregorian calendar and is thus considered a “movable feast” that is always celebrated between March 22 and April 25. Eastern Orthodox Christianity adheres to the Julian calendar, so Easter will fall on a Sunday between April 4 and May 8 each year. In 2022, the western Christian Easter celebration occurs on April 17 and the Eastern Orthodox Easter is observed on April 24.

Easter is the most important celebration on the Christian liturgical calendar. While commemorations

of Jesus Christ’s resurrection likely occurred earlier, the earliest recorded observance of an Easter celebration was in the second century, according to Britannica.

Initial Easter celebrations weren’t known as “Easter,” which is a word that was borrowed from Pagan spring celebrations of Eostre, the goddess of spring and fertility. It only became associated with Christian usage later on — long after biblical scripture was written. In fact, the word “Easter” only appears in one Bible, the King James Version. But it is likely the word was used as a translation of pascha,



or Passover, and not what has come to be known as Christian Easter.

The earliest Easter celebrations

were a version of Passover. According to leading sabbath scholar Professor Samuele Bacchiocchi, Christians universally

kept Passover on the biblical date of Nisan until 135 A.D. Early commemorations focused on the crucifixion, and the

pain and suffering of Jesus. Bacchiocchi says that eventually the resurrection emerged as the dominant reason for the celebration that would be known as Easter, and also as the main message of weekly Christian Sunday masses. By the fourth century, the Easter Vigil and celebration were well-established and a symbol of joyful anticipation of the resurrection.

Easter is now celebrated annually by faithful Christians. While Easter is not mentioned in the Bible, scripture depictions helped shape the holiday that would become an integral component of the Christian faith.

Why is Easter Sunday such an important Christian holiday?

Christians around the world fill church pews on Easter Sunday to participate in one of the most holy and important celebrations of the liturgical year. Although every Sunday presents opportunities to share in the word of God, Easter Sunday is an especially significant date on the Christian calendar.

Each Easter, Christians celebrate the miracle of Christ’s defeat over death through his resurrection and ascension to his father’s side in heaven. However awe-inspiring, Easter is much more than this event and its retelling. Easter actually is the core of the Christian

religion as it has come to be known, including inspiring the rituals and teachings that have been shared for nearly 2,000 years. Without the events that unfolded during Holy Week, the Christian faith would not exist as it was prophesied. Christ’s selfless sacrifice on the cross for others’ sins, as well as his miraculous resurrection, are the anchors upon which all of Christianity has been built.

In 1 Corinthians 15:17, St. Paul wrote, “And if Christ has not been raised, your faith is futile and you are still in your sins.” Pope Benedict VII similarly summarized St. Paul’s words, indicating that if the

resurrection were taken away, it may be possible to piece together ideas about God and men, but the Christian faith would be “dead.” In his book, Jesus of Nazareth, Pope Benedict further wrote, “Jesus would be a failed religious leader... he would then remain purely human, and his authority would extend only so far as his message is of interest to us.”

According to Christianity.com, Easter is part of the redemptive plan of mankind. It is worthy of celebration because it proved to people that Jesus is the Son of God. This gives Christians confidence that there is life after death, and they will

have the same power working in them that raised Jesus from the dead.

Out of Holy Week and Easter also came the start of Christian masses. On Holy Thursday, Jesus introduced his disciples to the bread that they ate at the Last Supper as “his body” and the wine as “his blood.” This would serve as the basis for the Christian celebration of Holy Communion, which remains a vital component of the faith and religious services.

Easter is a significant date on the Christian calendar that inspires Christians across the globe to celebrate their faith.



An Easter Poem

Two men there with Jesus
Hanging with him side by side.
One yelled accusations,
One for mercy cried.

Suddenly, both were standing
Before God’s mighty throne.
He asked them for the password
To enter the heavenly home.

One man could only hang his head,
His heart was filled with sin.
The other man said, “Jesus”
And God said, “Enter in.”

Someday, like them, you too shall die.
No more this earth you’ll trod.
You will also find yourself
Before the throne of God.

He will ask the reason
Why he should let you in.
If you don’t know the answer now
You won’t know the answer then.

A. Laughner wrote this poem when she and her family first moved to Fairmount years ago.



Warmest Wishes at Easter

Friends and customers like all of you bring sunshine to each and every day, and we wish you the best this spring and always!

NEIGHBORHOOD FRESH
1025 E Main • Gas City, IN 46933
765-674-9723

May You Find Peace, Faith & Joy at Easter

At this special time, we hope the warmth of God’s love and sacrifice brings hope and contentment to your heart and spirit.

Sweetser Cafe
114 N Main St • Sweetser, IN 46987
765-384-4404

All the Best This Easter

We’re so grateful for the friendship and support of this community, and we hope your Easter season is simply egg-cellent!

TOWN OF Fairmount
GRANT COUNTY INDIANA

FAIRMOUNT TOWN HALL
214 W. Washington St.
Fairmount, IN 46928
(765) 948-4632

Mental health disorders in seniors expected to increase

The number of seniors with mental health disorders is expected to double by 2030, according to a recent report from the American Hospital Association.

Some of that increase could be due to lack of treatment, as the AHA notes two-thirds of seniors

with mental health issues do not receive necessary treatment for their conditions.

The estimated increase in mental health condition incidence rates among seniors also could be due to what the World Health Organization notes is an increased vulnerability to such

issues among aging adults.

According to the WHO, mental health is shaped by numerous variables, including earlier life experiences and age-related stressors like a loss of functional ability and a reduced sense of purpose after retirement.

Warning signs for heart disease

Heart disease is the leading cause of death for women, men and people of most ethnic and racial groups, advises the Centers for Disease Control and Prevention. One person dies from heart disease every 33 seconds. Understanding the risk factors for heart disease is the first step toward prevention and management.

There are many things people can do to modify their risk for heart disease, but also some that cannot be changed. Ultimately, education is essential either way, and learning the risk factors for heart disease is vital to such education.

• Age: The risk for heart disease increases with age. For men the risk rises after age 45, and for women, it increases after menopause, or around age 55. Aging naturally leads to changes in the heart and blood vessels that increase the likelihood of developing cardiovascular problems, says the National Institute on

Aging.

• Sex: Initially men are at a higher risk of developing heart disease. However, over time a woman's risk after menopause tends to equal that of a man's. As estrogen levels decline after menopause, fat can build up in the arteries, causing them to narrow, says the British Heart Foundation. After menopause, body weight may increase, which also is a risk factor for heart disease.

• Family history: Those with a close relative who developed heart disease at an early age may be at elevated risk.

• Race: UChicago Medicine says Black and Hispanic people have an elevated risk of dying from heart disease compared to white individuals.

People may be able to change the following controllable risk factors for heart disease.

• Hypertension: Hypertension, also known as high blood pressure, forces the heart to work harder

and can stiffen the arteries. This can damage blood vessels over time. Medications and additional lifestyle changes can help seniors combat hypertension.

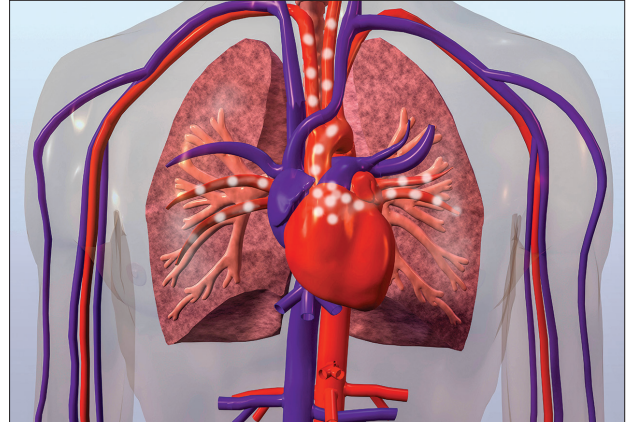
• Smoking: Smoking tobacco can damage blood vessels and reduce oxygen in the blood. Smoking also increases the risk of blood clots. Johns Hopkins Medicine says cigarette smokers are two to four times more likely to get heart disease than nonsmokers.

• Cholesterol: High levels of low-density lipoprotein (LDL), known as "bad" cholesterol, contribute to the buildup of plaque in the arteries. This can narrow arteries and restrict blood flow.

• Sedentary lifestyle: A lack of physical activity is a risk factor for obesity, high blood pressure and high cholesterol, each of which increases a person's chances of being diagnosed with heart disease.

• Dental health: Poor dental health can allow bacteria to enter the bloodstream, which can potentially lead to inflammation that affects heart health.

By understanding risk factors and actively making changes to behaviors that can be modified, people can take strides toward protecting heart health and avoiding cardiovascular disease.





VITA AFFORDABLE ASSISTED LIVING & MEMORY CARE OF MARION

FREE LUNCH WITH TOURS

4211 S. Adams St | Marion In. | 765-269-0564



Marion High School marksman Gwynneth Hamilton, senior, accepts her trophy after her first-place finish in rifle marksmanship at the U.S. Army Cadet Command's 7th Brigade Championship in Kentucky in March 2026. (Photo provided by Marion Community Schools)

Marion JROTC marksman Hamilton qualifies for Junior Olympics and All-Services National Championship

Marion JROTC cadet Gwynneth Hamilton has qualified for two prestigious national marksmanship competitions:

She will compete later this month in the National All-Services Air Rifle Championship in Camp Perry, Ohio — only the third Marion cadet to earn a spot at this competition. Then, in April, she will compete at the Junior Olympics in April in Alabama, the fifth Marion marksman to earn a spot in this prestigious event. The Junior Olympics is sponsored by USA Shooting. Only the very top marksmen from across the country qualify for attendance.

Hamilton qualified for the National Air Rifle Championship with an outstanding day at the All-Army JROTC Regional Air Rifle Championship in Ohio in February.

"It was awesome, amazing and very satisfying," Hamilton said of her experience and outcome at the All-Army Championship.

Col. Gary Blagburn (retired), Senior Army Instructor for the Marion High School JROTC, said her accomplishments are no easy feat.

"It is unbelievable the level of competition at [the All-Army



Marion High School marksman Gwynneth Hamilton, senior, has qualified to compete at the Junior Olympics in April at the Olympic Training Facility in Alabama. Only four previous Marion marksmen have earned trips to the Junior Olympics. She has also qualified for the National All-Services Air Rifle Championship in March in Ohio, only the fifth Marion marksman to earn their way to this competition. She is seen here competing during the U.S. Army Cadet Command's 7th Brigade Championship in Kentucky in March 2026.. (Photo provided by Marion Community Schools)

Championship]," he said. "It is excellent to see how Cadet Maj. Hamilton has developed as a shooter and is performing at such a high level."

Hamilton, a senior, has been competing on her own this year — as the Giants did not compete with a full marksman squad — and she has been consistently successful.

On March 15 she earned the championship title in the Precision category at the US Army Cadet Command's 7th Brigade Championship, held in Kentucky. The Giants

were competing in marksmanship, color guard, and drill at the event.

Anyone interested in helping to cover travel costs can donate online, <https://bit.ly/GiveToMHSJROTC>, through a pass-through fund administered by the Marion High School Alumni Association. You may also mailed your donation to JROTC at Marion High School, 750 W. 26th St., Marion, IN 46953, or drop donations at the school office during regular school hours.

2026 Easter Holiday PSA

City of Marion administrative offices will be closed on Friday, April 3rd, 2026

for Good Friday. Buses will not run on Friday the 3rd. Marion Utilities' offices and

recycling will also be closed on Friday, preceding the Easter holiday.



Your Heart Still Has More Tomorrows

When your heart feels off, do not wait.

At Marion Health, our Cardiolovascular team finds answers fast. Need a procedure? We're ready. Rebuilding strength? We guide you step by step. Living with heart or breathing problems? We help you stay strong and confident.

Call **765-660-6050** to schedule your heart check today.



CLASSIFIEDS

Business & Service ads Standard size \$198
Corporate size \$398 for 12 weeks!
812-827-2232 or 765-674-0070

KUMA WOOD STOVES
 HEATING & COOLING
 GAS LOG INSTALLATION
 GAS LINE INSTALLATION
 VIDEO CHIMNEY INSPECTIONS
 CHIMNEY RELINING
 MIDWEST DEALER FOR SMUDGE POTS



CHIMNEY SWEEPING
 ESTABLISHED 1981

ROBBIE KEAFFABER, PHD
 Doctor of Chimmology

PHONE: 260.563.8268
 CELL: 260.571.4688

For all your masonry needs

**Pavers • Natural Boulders • Flagstone • Driveway Rock
 Ledger Rock Lawn Edgers • Retaining Walls• Concrete
 Blocks • Brick Sand blasting & Rock Engraving**



DUBOIS COUNTY
 BLOCK & BRICK
 2206 Newton St • Jasper, IN

812-482-4444
www.dcblockbrick.com

SMOKE VALLEY TREE SERVICE

- Tree & Stump Removal
- Topping, Trimming
- Lifting Dead Wooding
- Custom Shaping
- Log Clearing
- Fence Row Clearing
- Trimming All Shrubs & Bushes
- 23 1/2 Hour Storm Damage Cleanup Available
- Fully Insured & Bonded For Your Safety and Ours

Owner: Jeff Hayes / Justin Hayes
765.506.2737 • 765.603.1448



SCOTT'S
Grant County Asphalt Inc.
765.664.2754
Don Scott, Owner

If no answer, please leave your name and number.
Serving Marion, IN, Grant County & surrounding towns within 1 hour drive or less



BUSSEY BROS. AUCTIONEERS
BBA

LIVE ONSITE AUCTIONS W/ ONLINE BIDDING

Our Auction Services:
 Real Estate -Farm Retirements-Heavy Equipment
 Consignments-Business Liquidations-Inventory
 Reductions-Fleet Reductions-Construction Equipment

Thinking of having an auction?
 Call or Email us today!
 If you are considering selling farm machinery, construction equipment, or real estate, we are ready to help you plan YOUR AUCTION.

Bussey Bros. Auctioneers
(844)- SOLD-BBA or (844)-765-3222

9. 4938 S ST RT 49 Greenville OH 45331 sales@busseybros.com

Equipmentfacts
 Powered by TractorHouse.com MachineryTrader.com TruckPaper.com & MarketBook.com

**NO JOB TOO BIG.
 NO JOB TOO SMALL.**

**GENERAL CONSTRUCTION
 YOU CAN TRUST**

- Repair
- Remodel
- Roofing
- Foundations
- New Construction

FREE Estimates • 30 Years Experience
Amish Built Quality
260.251.6700

GUDORF CONTRACTING INC.
PLUMBING, HEATING, AIR-COND & ELECTRICAL

OWNER:
MARK GUDORF

812-482-1081
812-309-0661

JASPER, IN

Radiant Heat

CHUCK'S
Plumbing Contractor
 On duty 23 1/2 hours a day

Sewer & Drain Cleaning, Septic Tank Cleaning, Excavating, Demolition, Dump Truck Service Gator Cam Camera

SCAN THIS



IF YOU HAVE A #2 PROBLEM MAKE US YOUR #1 CALL

3820 S Lincoln Blvd Marion, IN 46953-5501
765-664-2536

2015 NEW HOLLAND BIG BALER 330R Crop Cutter, 3 x 3 square bales w/preservative, rotor cutter, steerable tandem axle, hdy. folding roller chute, auto-lube, Intelli III monitor. 9778 bales, \$89,000 OBO. Call Robert at 815-291-6856.

2014 MASSEY FERGUSON 2270 BALER, 3 x 4 square bales w/preservative knottor blower, standard chute, single axle, 8869 bales, \$79,000 OBO. Call Robert 815-291-6856. (tfn)

ROOM FOR RENT
 ROOM FOR RENT: Near MGH, Large Furnished Bedroom, utilities included, tv, cable, wifi, refrigerated, washer and dryer, parking is free, \$100 per week. Plus deposit. Working preferred. Please call Jim at 916-995-4400.

FARM MACHINERY
 For Sale: John Deere 9610 combine, four wheel drive, model 893 8-row corn head and 625 full finger flex bean head. \$40,000. Loogootee, Indiana. 812-295-6807

HELP WANTED
 Part-time cleaning position in Jasper. Wednesday and Saturday. (5 hours each evening). call 812-827-3145 for interview (tfn)

SERVICES
CINDY'S Odd Job Service
 House Cleaning. CHRISTIAN-Owned Business. (Free Estimates) 812-972-3059 (4-3-26-4x)

FOR SALE / GENERAL
Log Splitter And Wood Burning Stove - \$800. Call- 765-702-7437. (3-26-26-tfn)

FIREWOOD FOR SALE: Split Firewood \$75.00 truckload 765-667-7637 (9-11-25-4x)

SHOP SMITH: Table Saw; Wood Lathe; Drill Press; Band Saw; All-in-One, & All Attachments.

S650. Call- 765-348-3277. (9-20-25-tfn)

For Sale: 1 Whole Bedroom Set, Dresser, Living Room Set, 2 Recliners, Queen Mattress & Box Springs, Breakfast Set with Hutch, Table & 6 chairs. Call 812-367-2658. (9-20-25-tfn)

Industrial air compressor, 10HP, 3 phase electric, 120 gal. horizontal tank, low compressor oil shutoff, works like new, \$1200. 765-238-9883 Hagerstown, IN

850 JD tractor finish mower, front loader, 3 point hitch, less than 1000 hours, great condition, sized for mowing a large yard/acreage. Asking \$11,500. 270-898-2805.

(Dresser TD15c) bulldozer, 1000 hrs on overhaul, injector pump rebuilt, 70% undercarriage, radiator ljust build out, \$18,000 Call: 812-709-0263 Shoals, IN (tfn)

2011 Kawasaki Ninja 250 Black, flush LED lights, riser, frame sliders, security wheels & locks and cover. ONLY 700 mi., military and no time to ride. \$3900. 812-457-5693

1997 Sea Nymph 17' fish & ski boat. 115 Johnson outboard, easy load trailer, travel cover, trolling motor, depth finder and lots of extras. \$8500 call 812-683-4266

2009 3 Wheel Scooter. 50cc, blue and white, low miles, used 1 season only. Very good condition, \$1800 Call 812-683-4266.

REAL ESTATE
 54+/- ACRE FARM FOR SALE Lake Village, Arkansas. Very good income producing cropland with beautiful view of Lake Chicot. Beautiful home sites. 766 +/- ACRE PROPERTY FOR SALE Beautiful property located near Town Creek, Alabama. This previously wooded property is being cleared and converted to farm land, with approximately 300 acres already converted. Very good soils for cotton, corn, and soybeans. Would also make a spectacular cattle ranch. Excellent hunting with large bucks and lots of turkeys. MORE LAND AVAILABLE! 284 ACRE FARM FOR SALE Excellent 280 acres farm for sale in southeast Arkansas, including very fertile, precision leveled, and irrigated farm land, plus exceptional duck and deer hunting. Super location, fronting

on excellent paved highway. www.underwoodlandcompany.com 256.655.9266 or 256.679.2039 (7-10-25_tfn)

40 ACRES SOUTHWEST INDIANA. Great deer, turkey and fishing, 7 acres, pasture, 3 lakes, balance mature woods. Call Todd Shaus Land Specialist 812-480-2541.

ARE YOU BUYING OR SELLING LAND? For free market analysis Call Todd Shaus - Land Specialist for all your land needs. 812-480-2541.

RECENTLY REDUCED: 5 fenced acres in Pike County with 2 older homes (needs work), appliances, some furniture, and some tools. Stocked pond, 3 out buildings, 2 large garden areas, and various fruits. Not negotiable. recently reduced to \$98,000 812-536-5308.

ARE YOU BUYING OR SELLING LAND? For free market analysis Call Todd Shaus - Land Specialist for all your land needs. 812-480-2541.

RECENTLY REDUCED: 5 fenced acres in Pike County with 2 older homes (needs work), appliances, some furniture, and some tools. Stocked pond, 3 out buildings, 2 large garden areas, and various fruits. Not negotiable. recently reduced to \$98,000 812-536-5308.

ARE YOU BUYING OR SELLING LAND? For free market analysis Call Todd Shaus - Land Specialist for all your land needs. 812-480-2541.

RECENTLY REDUCED: 5 fenced acres in Pike County with 2 older homes (needs work), appliances, some furniture, and some tools. Stocked pond, 3 out buildings, 2 large garden areas, and various fruits. Not negotiable. recently reduced to \$98,000 812-536-5308

100 acre prime tillable land, North Spencer county, road frontage, city water main, PUT YOUR TURKEY FARM HERE! Todd Schaus -Property Experts 812-480-2541.

MOVING Motivated seller 5 fenced acres in Pike County. 2 older homes (needs work), appliances, some furniture, and some tools. Stocked pond, 3 out buildings, 2 large garden areas, and various fruits. Not negotiable. recently reduced to \$98,000 812-536-5308

NEW Double wide or single wide. Financier available. ZERO Down w/land. Land/Home package available. FREE delivery on your new home. 812-354-2197.

DWELLINGS FOR SALE
 Home located in English, IN . Sits on two acres w/attached garage. 3bdr., 2 ba., \$65,000 Call Becky Higgins/Remax 812-267-6264.

105 acres (100 tillable acres) and home located at 6066 HWY. 142, Philpot, KY \$975,000 270-925-2961 (tfn)

STUMP GRINDING
 STUMP GRINDING AND REMOVAL- Insured professional, best rate guaranteed. 812-639-5222.

RECREATIONAL VEHICLES
 44' SC 5th Wheel MONTE CARLO \$37,500 2 bd, 3 elec. slideouts, elec. awning, 3 central ac/h units, washer, dryer, lg. appliances, fireplace, satellite/cable ready. No smoking/pets !!!MUST SELL!!!! 870-329-4933

FARMING & FARM EQUIPMENT
 FARM EQUIPMENT. Serial 4966. 1968 Allis Chambers 170 gas. 1owner, 3,188 hours. Stay in all gears. Torque good. Power steering - front weight spin out rims, rear tires 16-9-28, front 7-5x16, PTO drawbar, factory 3 pt, hydraulic outlets, top link, radio, tool box. Runs and operates like it should. Lights all work. 260-609-6912 Columbia City IN

No 18 New Idea ground drive manure spreader. Operates like it should. Hard to find them in this condition. \$4,250.00. 260-609-6912 Columbia City IN

Serial #28199. 1973 International 1066 tractor w/cab. 18-4-38 rear tires w/9 Boc and Axle duals. 10:00x16 front tires. Rear weights, 2 hydraulic remotes 540/1000 PTO 3 pt and heat/ac, AM/FM radio, 3764 original hours. In frame overhaul at 3200 hours, top link, front weight bracket and torque good. As nice as you will find. 260-609-6912 Columbia City IN

New Idea 323, exc. shape, field ready. \$3500. 260-609-6912 Columbia City, IN

(CASE IH 7140) Magnum. Great tires. 5,100 hours. Front wheel assist. Dual, 200 horse. Asking \$41,500. 812-889-2415. Leave message. Will call back. (tfn)

2008 CIH 2412 cornhead 12 Row 20", just had new sprockets & gathering chains, exc. cond., \$35,000. 931-273-6153 Winchester, TN.

2010 Versatile-485, Cat., PS, 2395 hours, 4wd, QSX 15 L Cummins, recent overhaul, 710/42 Michelin tires 70%, factory AS, 6-hyd, remotes \$119,500. Call 618-535-3456. (tfn)

2011 JD 9230, 3-point PTO, AT-ready, 3012 hours, one owner, \$129,500-obo. Call (217) 242-

NOTICES

EFFECTIVE IMMEDIATELY

IF YOU HAVE PLACED A GUARANTEED CLASSIFIED AD WITH US, PLEASE CALL 765-674-0070 OR 812-827-2232 TO LET US KNOW TO TAKE THE ITEM OUT IF IT HAS SOLD.

If you do not see your ad, and it is supposed to keep running, please give us call.

Classified rates: \$20 first week, \$10 second week, \$10 third week, 4th week FREE (consecutive run). Guaranteed Classifieds (Run any ONE item for sale) \$40 -> 25 words. \$80 -> 26-to-50 words \$120 -> 51-to-75 words \$160 -> 76-to-100 words Item runs until sold! Seller must call newspaper to STOP running the ad.

ALL CLASSIFIEDS are pre-paid. Call 765-674-0070 Or 812-827-2232 Friday at 4:00 P.M.

Email ad copy to: Pamela.kpi2018@gmail.com

WANTING TO BUY

Wanting to buy. 1 row corn picker in working condition. Call 812-389-2767.

(7-31-25-4x)

FARMING EQUIPMENT

New Sudenga 10" x 36' Elec and (2) PTO Drive Transport Augers w/ 17 Degree Hoppers - 270-209-0259

New Sudenga 13" x 82' Swing Away with electric drive wheel kit 270-209-0259

New Sudenga 13" x 72' Swing Away with electric drive wheel kit 270-209-0259

New Sudenga 10" x 71' Swing Away with or with electric drive wheel kit 270-209-0259

New AGI Hutchinson 13" x 74' Swing Away with Hyd drive wheel kit, Hyd hopper winch 270-209-0259

(two) NEW Sudenga drive over chain conveyor, 5,000 BPH & 7,000 BPH. 270-209-0259

NEW Batco 1539 Belt Conveyor electric and hydraulic drive. 270-209-0259

Demo wheat heart post pounder 270-209-0259.

KILLBROS - 1200, Factory ext's, 750 bu., new vertical augers, Exc. shape, 30.5x32 tires. \$10,500 OBO 217-493-2105



Marilyn Wells
317-366-2597

Online-only
Live on-site
Farm & Heavy Equipment
Business Liquidations

Illinois #2570



TAYLOR
Auction Co.

At your service for all of your auction needs




Zac Taylor
618-944-0086

visit our website for Auction Calendar & Listings >>> www.taylorauction.net

LET US HELP CUSTOMIZE YOUR NEXT PROJECT

Pole barns with laminated or perma column post. Concrete footer and poured walls. Concrete slab option heating system in floor. Line and insulate walls, Ceilings with liner panels.



Schwartz Building Supply
Grabber
Specializing in Pole Barns

POLE BARN-CALL FOR PRICES		
30' X 40' X 12' 1-12' X 10' OVERHEAD 1-36" AGRI-DOOR 2-WINDOWS TRUSS 4' ON CENTER	40' X 64' X 14' 1-16' X 12' OVERHEAD 1-20' 14" SPLIT SLIDER 1-36" AGRI-DOOR 2-WINDOWS TRUSS 4' ON CENTER	48' X 80' X 14' 1-16' X 12' OVERHEAD 1-20' 14" SPLIT SLIDER 1-36" AGRI-DOOR 2-WINDOWS TRUSS 4' ON CENTER
60' X 120' X 16' 2-30' X 16" SPLIT SLIDER 1-36" AGRI-DOOR 2-WINDOWS TRUSS 4' ON CENTER	80' X 200' X 16' 1-36' X 16" SPLIT SLIDER 1-20' X 14" OVERHEAD 2-36" AGRI-DOORS 2-WINDOWS TRUSS 4' ON CENTER	PKGS. AVAILABLE FOR DO-IT-YOURSELFERS #1 - 40-YEAR WARRANTY ON METAL, CUT TO YOUR SPECS AND ALL TRIMS

PRICES SUBJECT TO CHANGE WITHOUT NOTICE

BRYANT, IN 47326
AMISH-BUILT
260-760-5431



We install Standing Seam Metal Roofs
We sell Standing Seam Metal with delivery on site

Give us a call
Office **765.857.2623**
Cell **765.509.0069**

Riddle's Tree Service

- Trimming
- Topping
- Tree Removals
- Stump Removals
- Free Estimates
- Insured

Call 765.506.2141

hydraulic outlets, top link, radio, tool box. Runs and operates like it should. Lights all work. 260-609-6912 Columbia City IN

No 18 New Idea ground drive manure spreader. Operates like it should. Hard to find them in this condition. \$4,250.00. 260-609-6912 Columbia City IN

Serial #28199. 1973 International 1066 tractor w/cab. 18-4-38 rear tires w/9 Boc and Axle duals. 10:00x16 front tires. Rear weights, 2 hydraulic remotes 540/1000 PTO 3 pt and heat/ac, AM/FM radio, 3764 original hours. In frame overhaul at 3200 hours, top link, front weight bracket and torque good. As nice as you will find. 260-609-6912 Columbia City IN

New Idea 323, exc. shape, field ready. \$3500. 260-609-6912 Columbia City, IN

(CASE IH 7140) Magnum. Great tires. 5,100 hours. Front wheel assist. Dual, 200 horse. Asking \$41,500. 812-889-2415. Leave message. Will call back. (tfn)

2008 CIH 2412 cornhead 12 Row 20", just had new sprockets & gathering chains, exc.

FOUNDATION REPAIR, BASEMENT WATERPROOFING, AND MORE SERVICES

CALL TODAY FOR YOUR NO-OBLIGATION ESTIMATE



UNITED DYNAMICS
FOUNDATION SOLUTIONS

812-464-2222 • 800-555-8971

www.udipdi.com • Free estimates

power steering, power breaks, cruise control, tack, garage kept, stored in winter, 35-40 mpg. Very clean, well kept car! Comes with car cover. This car won 1st Place in open stock competition at Heartland Worship Center Car Show in 2014. \$9,500. Call 270-554-7367, leave message if no answer. (tfn)

2000 DODGE RAM 2500 SERIES, V8 Magnum SLT, 17" NEW Tires, Body Lift Kit, Cold Air, 103,000 miles \$6500.00 - 812-549-5216 or 812-309-2214.

2004 STERLING tri-axle dump truck, 8LL transmission, 16.5 ft. aluminum bed, 849,000 miles, great shape, mechanically sound, one owner, professionally maintained. Mid 30's Call 812-639-1078 (tfn)

2009 TOYOTA CAMRY LE. New tires. \$6,250 call 812-639-1246.

2006 YAMAHA ROADLINER 1900 w/ accessories. 29,000 miles and 2,000 miles on the tires. Drag pipes and Mustang seats. \$5,500 call 812-686-1774.

2004 STERLING TRIAXLE DUMP TRUCK, 8LL transmission, 16.5 ft. aluminum bed, 849,000 miles, great shape, mechanically sound, one owner, professionally maintained. Mid 30's Call 812-639-1078 (tfn)

1976 CADILLAC ELDORADO CONVERTIBLE, front wheel drive, 22,400 actual miles, 2nd owner for over 30 years. Mint. Never rained on. Always garaged and covered. \$23,900 firm. 812-481-1470.

MOTORCYCLES & ACCESSORIES

2001 1200cc Sportster Turned Trike, low mileage, \$8000. Please call 765-618-4497. (6-7-24 tfn)

2007 Honda Shadow, excellent motorcycle. 2 owner. White & Grey. 13,100 miles. Asking \$4,000. Please call...765-661-5498. (7-26-22 tfn)

Lincoln Manor of Holland

300 S. MERIDIAN STREET HOLLAND, INDIANA

One BR Apart • ALL utilities included in rent • Community Room & Laundry facility • must be 62 years of age or disabled • RENT BASED ON INCOME • Section 8 Rental Subsidy

FOR ADDITIONAL INFORMATION OR TO INQUIRE ABOUT THE AVAILABILITY OF APARTMENTS, PLEASE CONTACT:

1-800-467-1435 EXT 519
TDD: 1-800-743-3333
WWW.LHDC.ORG





LHDC provides services to clients regardless of age, sex, race, color, religion, disability, veteran status, genetics, national origin, ancestry, sexual orientation, gender identity, pregnancy, or familial status. The agency is an Equal Opportunity Employer.

Lincoln Village Apartments

506 PLEASANT VIEW DRIVE HUNTINGBURG, INDIANA

One BR Apart • Water, Sewage & Trash included in rent
Two onsite Laundry facilities • must be 62 years of age or disabled
RENT BASED ON INCOME • Section 8 Rental Subsidy

FOR ADDITIONAL INFORMATION OR TO INQUIRE ABOUT THE AVAILABILITY OF APARTMENTS, PLEASE CONTACT:

1-800-467-1435 EXT 519
TDD: 1-800-743-3333
WWW.LHDC.ORG





LHDC provides services to clients regardless of age, sex, race, color, religion, disability, veteran status, genetics, national origin, ancestry, sexual orientation, gender identity, pregnancy, or familial status. The agency is an Equal Opportunity Employer.

Sudoku Answers

8	4	5	1	3	9	6	7	2
1	6	3	8	2	7	9	5	4
2	9	7	5	4	6	3	1	8
3	5	1	9	6	2	4	8	7
6	2	4	7	1	8	5	9	3
7	8	9	4	5	3	1	2	6
4	3	8	2	9	1	7	6	5
9	7	6	3	8	5	2	4	1
5	1	2	9	7	4	8	3	6

Word Search Answers

T X K R B B W R N N I U R E I M J D S S D P
T J L I O H R D O H S L I M T Y O G V O I C C
G B B V M T V S O W H H I T Y O G V O I C C
H S S S H W B E E R S V O G C D W M B B V
H O H I J O G E E H W K T X T L J G B B V
J D D S O A O R C K V Y T H S L L D D E
C H I I S O A O R C K V Y T H S L L D D E
C H I I S O A O R C K V Y T H S L L D D E
O O H N N H I N D J O D O O J B N M S O V
V O S S V L J V H L I T V S N S I M O V S
C O T O H I D D I Y L T T T V I R I H N K V
S S B I R V R I I A O C C I D O S S T I H S
9 I T I V V R E S E O O O C C I D O S S T I H S
S S R G S S T I X N J J O J O N J I N L B T
9 J I S S E T I V I N R K E B B V I D 7
J J C E H R H X J R O J E C V V R B V
I T C A I B G N N K R B B N N G V R M M
H S U L I B G N N K R B B N N G V R M M
I B I R T K C Y V I L O 9 9 J I I I

WE'RE HIRING

HELP WANTED

We are! HIRING.

HELP WANTED

JOIN OUR TEAM

JOIN OUR TEAM



GET THE WORD OUT

Connect With More Local Job Candidates. Advertise in the Classifieds!

Print & online packages • Affordable ad rates

To learn more or get started, call or email today.

Email kpiads@ky-news.com
or Call 765-674-0070 or 812-827-2232

2010 Versatile-485, Cat., PS, 2395 hours, 4wd, QX5 15 L Cummins, recent overhaul, 710/42 Michelin tires 70%, factory AS, 6-hyd, remotes \$119,500. Call 618-535-3456. (tfn)

2011 JD 9230, 3-point PTO, AT-ready, 3012 hours, one owner, \$129,500-obo. Call (217) 242-9105 (tfn) JD-S550 684 Eng. hrs., 469 sep. hrs, 2WD duals, custom cab, 3- spd. elec. shift, contour master. Retiring. Asking \$180,000. (815) 228-4021.

JD 7720, 4WD, 30.5x32 tires, long auger, \$12,000 OBO. Call 859-608-4942

JOHN DEERE 6700 sprayer, new in the spring of 08, 603 hours, 60 ft. boom, 3 wheel with shields \$67,500. PRICED REDUCED!!! Call anytime 309-376-6741. (tfn)

210 ft. HIC Leg, 7500 Bu. per Hr., reconditioned 217-379-2016 Evening

Anhydrous Wagons - Very good cond. farmer owned, \$1800 262-497-3600

7200 MaxEmerge II 1630, row cleaners, copper head closing wheels, 350 JD monitor, new tires, liq in the row, Keyton seat firmers, \$8900-obo. 309-825-1056 (tfn).

2015 New Holland Big Baler 330R Crop Cutter, 3 x 3 square bales w/ preservative, rotor cutter, steerable tandem axle, hdy. folding roller chute, auto-lube, Intelli III monitor. 9778 bales, \$89,000 OBO. Call Robert at 815-291-6856. (tfn)

2014 Massey Ferguson 2270 Baler, 3 x 4 square bales w/ preservative knottor blower, standard chute, single axle, 8869 bales, \$79,000 OBO. Call Robert 815-291-6856.

KillBros Seed Tender w/plastic auger, \$2,000 1985 M & W 375 Wagon \$2,200 309-275-0524. (tfn)

2007 Geringhoff Rotadisc, 8 row head, w/ rotacone corn savers, this head is very good and had very little use, needs no work on it before fall season, always shedded \$29,000 815-761-2531. (tfn)

2006 Mustang. 634 telehandler, 6,000 lb cap., 34ft lift, 2,462 hours. foam tires. JD Diesel Engine. Very good condition. \$25k OBO, 812-852-4594 Osgood, IN (tfn)

BUSINESS FOR SALE
Saw Mill Business for sale. Located in Tazwell, IN. \$250,000 OBO Call Becky Higgins/Remax 812-267-6264 (tfn)

Children's clothing resale business, \$7,500. includes 5000 items. 235 East Main Street. Gas City, Indiana . Donna 510-599-9010

AUTOS FOR SALE
2015 Nissan Frontier SV pickup full, 4-door, loaded and showroom new. 12,200 miles. Call 812-482-6304. If no answer, leave message. 2-25-22 tfn

2013 RED SMART FOUR TWO CONVERTIBLE, 43,000 miles,

To place your ad, call
765.674.0070 or 812.827.2232



SHIELD TEK ROOFING

Whether you replace it or refurbish it, you need to shield it.

812-913-ROOF

Jasper, IN
Find us on Facebook: ShieldTek

Follow farm safety guidelines

Agriculture is routinely ranked among the most dangerous professions around the world. Both the National Safety Council and the National Institute for Occupational Safety and Health say agriculture is one of the most hazardous industries in the United States. Farming operations continue to push forward with more mechanized and high-tech equipment that requires routine reviews of safety protocols.

According to the Bureau of Labor Statistics and NIOSH, the agricultural sector recorded a fatal injury rate of approximately 18.6 deaths per 100,000 workers in 2023. Transportation incidents, notably tractor rollovers, remain the leading cause of death. Furthermore, recent reports from the National Children's Center for Rural and Agricultural Health and Safety indicate that a child dies in an agriculture-related incident in the United States approximately every three days, which underscores the need to prioritize farm safety across all age groups.

Ensuring safe working conditions is vital within the agricultural sector. These guidelines can set the course for safer farming work.

- Rollover Protective Structure (ROPS): The most effective lifesaver on a farm is ROPS. When combined with seatbelt use, ROPS is 99 percent effective in preventing death during a tractor overturn. ROPS are roll bars or roll cages fitted for wheel- and

track-type tractors, says Penn State Extension. Modern guidelines indicate that all machinery should be fitted with updated guarding to prevent entanglement accidents, which are often caused by Power Take-Off shafts.

- Respiratory protection: Grain bins and silos can pose significant risks on a farm. This includes toxic air exposure as well as the risk for engulfment. High-profile incidents in 2023 illustrated the threat that oxygen-limiting silos can pose after deadly carbon dioxide concentrations form. Risk of suffocation also is great in a grain bin if a person is engulfed by grain. Workers should never work in a bin alone and should utilize a lockout/tagout system to ensure that all augers are off before entry.

- Chemicals and biological hazards: High-potency pesticides and fertilizers create their own hazards on the farm. Personal protective equipment (PPE) is a must when working with chemicals. Most modern standards require proper ventilation, chemical-resistant gloves and dedicated eye protection to prevent acute poisoning and long-term health issues.

- Hearing protection: Exposure to the sounds of farm machinery and other equipment can result in tinnitus (ringing in the ears) and eventual hearing loss unless hearing protection is worn regularly.

- Fatigue and mental health: Mental and physical fatigue of

farm workers can result in injury as well. A critical trend uncovered in recent agricultural safety research ultimately led researchers to conclude that "fatigue management" needs to be prioritized, according to the United States Department of Agriculture. Tired operators can be vulnerable to lapse-of-attention errors, so farmers are encouraged to implement scheduled breaks. The Rural Health Information Hub says that stress also is a big factor for farmers. Environmental factors such as drought, floods, wildfires, pests, and diseases, as well as long hours and financial concerns, can result in feelings of isolation and frustration. Stress is a known precursor to physical accidents on the farm.

These are just some of the risk factors on farms that can lead to accident or injury. Falls from ladders, injuries from livestock, exposure to UV rays, and exposure to high levels of dust, mold and bacteria also can affect modern farmers. Agricultural safety needs to evolve as quickly as the changing operations on farms.



KIKO AUCTION
Jaloda Farm LLC Dispersal
(9) TRACTORS, JOHN DEERE & CASE, FULL LINE OF TILLAGE, PLANTING, HAY & DAIRY EQUIPMENT
LIVE ONSITE WITH ONLINE BIDDING AVAILABLE
 Absolute auction, all sells to the highest bidders.
Location: 45555 SR 303, WELLINGTON, OH 44090
 Directions: Take SR 58 north of Wellington, OH or south of Oberlin, OH to SR 303 and just east to address. Watch for KIKO signs.
Saturday, April 4, 2026, 10:00 AM
 Preview: Friday, April 3, 2026, 12:00-4:00 PM

AUCTIONEERS NOTE: Jaloda Farms have been in the area for 110 plus years. Having sold the dairy cattle in the fall of 2025, Jim & family are retiring from farming. The auction is a live auction with online bidding available through Proxibid & Equipment Facts. Hope to see you at the auction.

SALE ORDER: 10 AM start with small items. The catalog items to start at 10:45 AM. Full listing at kikoauctions.com

ONSITE TERMS: Driver's license or State ID required to register for bidder number. Cash, Check, Debit Card, Visa, or MasterCard accepted. 4% buyer's premium on all sales; 4% waived for cash or check when paid sale day. Information is believed to be accurate but not guaranteed. Multi Par auction process may be used.

ONLINE TERMS: Visa, MasterCard, Wire Transfer and auctioneer approved check accepted. Wire transfers required on invoices over \$3,000. 7% buyer's premium on all sales. Information is believed to be accurate but not guaranteed. Multi par auction process may be used.

Auction By Order Of: Jaloda Farm LLC, The Sheffield Family
 Auctioneer/Realtor: Randall L. Kiko, 330.831.0174, randallkiko@kikocompany.com

KIKO Auctioneers | (330) 455-9357 | www.kikoauctions.com



Putting farm waste to good use

Agricultural waste poses a challenge for farmers, even if the subject does not garner a lot of attention outside of rural areas. Farms generate enormous amounts of organic waste, including crop residues, fruit peels, sawdust, and livestock manure. Farmers

must decide how to get rid of agricultural waste legally and economically.

If not disposed of properly, farm waste can pollute the environment, particularly the air and waterways like rivers and streams. It is best for everyone to mitigate agricultural

2026 Annual Spring Collector Auction

2 Huge Days!

Accepting Consignments NOW through April 8th @ 5 pm EDT

LOCATION: 72435 SR 15 • NEW PARIS, IN 46553

Thursday & Friday April 9 & 10, 2026

Starting at 8:30 am EDT Daily

Featuring the Private Collections of Harlan Beer and Larry Polk

Day 1 Thursday, April 9

Ring #1 Tractor Parts
 Ring #2 Toys, Signs, Memorabilia, Collectibles, Literatures & Primitives

Day 2 Friday, April 10

Ring #1 Hundreds of Non-Running Tractors & Running Tractors Hit & Miss Motors and 150+ Highly Desirable Tractors
 Ring #2 Equipment, Implements, Pallets of Parts & Much More!!

Check our website for more info and catalog as it becomes available!

Polkauctionlive.com



POLK AUCTION COMPANY
 NEW PARIS, INDIANA
 #AC30900103 #AU19400160
 72435 State Road 15
 New Paris, IN 46553
1.877.915.4440



BID ONLINE!! ...OR BID LIVE!

Online Bidding Provided By **EquipmentFacts**

Live Online Bidding | Powered By **proxibid**

Call us to Consign 1.877.915.4440

Ag Innovation Challenge Opens: \$100K for top entrepreneur

The American Farm Bureau Federation, in partnership with Farm Credit, is accepting online applications from entrepreneurs for the 2027 Farm Bureau Ag Innovation Challenge through June 5. Now in its 13th year, this national business competition showcases U.S. startup companies developing innovative solutions to challenges faced by America's farmers, ranchers and rural communities.

The overall winner of the competition will receive \$100,000 in startup funds, the runner-up will be awarded \$25,000 and two additional business owners who advance to the final four round will receive \$10,000.

"Encouraging innovation is essential to keeping American agriculture strong," said AFBF President Zippy Duvall. "If you're building a business that can help farmers and rural



communities thrive, don't wait, apply today."

Farm Bureau is offering a total of \$145,000 in startup funds throughout the course of the competition. After the application period closes on June 5, 10 semi-finalist teams will be selected and announced on Sept.

2. Next, the 10 semi-finalist teams will pitch virtually to compete for a spot in the final four round of the contest.

The final four teams will be awarded \$10,000 each and participate in a live pitch competition in front of Farm Bureau members, investors and industry

representatives at the AFBF Convention in January 2027 in Charlotte, North Carolina, to win:

Farm Bureau Ag Innovation Challenge Winner, \$90,000 (total of \$100,000)

Farm Bureau Ag Innovation Challenge Runner-up, \$15,000

(total of \$25,000)

Farm Bureau is proud to recognize these innovative businesses, in partnership with sponsors Farm Credit, Bayer, John Deere, Farm Bureau Bank, Farm Bureau Financial Services, ClearPath and T-Mobile.

Recent winners of

the Ag Innovation Challenge include FarmMind (2026), a company that unifies farm workflows from GIS to compliance and agronomic insights, and Gripp (2025), a company that provides an operator-focused tool for asset tracking and team communication. Other examples of successful Ag Innovation Challenge participants, as well as detailed eligibility guidelines and the competition timeline, can be found at fb.org/challenge.

Entrepreneurs must be members of a county or parish Farm Bureau within their state of residence to qualify as top 10 semi-finalists. Applicants who are not Farm Bureau members can visit <https://www.fb.org/about/get-involved> to learn about becoming a member.

Applications must be received by 11:59 p.m. Eastern Daylight Time on June 5.

WASTE, from page 9

waste to create further hazards. Farmers may not have considered recycling some agricultural waste, but it is a way to transform this potential hazard into something that

can be used on the farm itself or sold commercially.

The following are some considerations for putting farm waste to good use.

Compost

Animal waste, crop residues and additional organic material can be combined to create nutrient-rich compost. Compost is utilized to improve soil structure, fertility and water

retention. This helps reduce reliance on chemical fertilizers. By investing in large-scale composting tools, farmers can process hundreds or even thousands of tons of organic matter each year. While some can be used on the

farm, the excess can be sold at a profit.

Biogas

Biogas production is carried out through a process known as anaerobic digestion (AD). The U.S. Environmental Protection Agency says AD involves bacteria breaking down organic matter, such as animal manure, wastewater biosolids and food wastes in the absence of oxygen. As the bacteria digest the waste, they generate biogas, which is mostly comprised of methane. Capturing biogas can reduce greenhouse gas emissions on a farm, and the biogas can be turned into a renewable energy source to power electricity, heating or transportation, according to Prime Dumpster Incorporated.

Digestate

Anaerobic digestion

does not only produce biogas. Digestate is the solid and liquid effluent remaining after the process, says the EPA. Digestate can be used in many applications, including animal bedding, fertilizers and a foundation material for creating bioplastics and other bio-based products.

Recycling

Certain items used on farms cannot be turned into compost or fertilizer. However, recycling containers, tires, cardboard, rubber, and plastics offers the potential for these products to be made into new items. Western Packaging says recyclable items can be kept separate from other waste so they can have new life outside of landfills.

Seeing farm waste as an asset and not a problem can help farmers save money and resources.

ONLINE AUCTION

ENDS MONDAY APRIL 6TH @ 6PM (CST)

BOONVILLE, INDIANA

To view and bid go to www.Dimmettauctionservice.com and click on **HiBid Online Auctions**"

LOCATION: DAS will be having an Online auction at 3699 SR-62 East Boonville, Indiana. It's just East of Deagonia Springs. There will be a \$20 transfer fee and the items will need to be picked up at DC Firearms LLC located at 5747 West County Road 600 North Richland, IN. To view and bid go to dasonlineauctions.hibid.com.

PREVIEW: You can preview items on Sunday, April 5th from 1-3^{PM} located at 3699 SR-62 E Boonville, IN in the **BLUE BARN**. To view and bid go to dasonlineauctions.hibid.com.



50+ GUNS



To view and bid go to www.Dimmettauctionservice.com and click on **HiBid Online Auctions**"

AUCTION PICKUP: Will be at 5747 West County Road 600 North, Richland Indiana.

TERMS: Pick up time is Tuesday, April 7th from 10AM to 5^{PM}. Cash, check, and or credit card (3% charge) when you pick up your items. A 10% buyers premium & 7% sales tax will be charged for this consignment online auction. Shipping available. Any announcements made day of auction shall take precedence over any verbal or printed material.

To view and bid go to dasonlineauctions.hibid.com.

Dimmett Auction Service & Realty (812) 897-1747
 1444 White Road • Boonville IN 47601
www.dimmettauctionservice.com
 Robert E. Dimmett • Owner/Auctioneer
 Lic #AU09200240

Gross domestic product

Data from the Bureau of Economic Analysis indicates the significance of farms in relation to the gross domestic product of the United States economy.

In 2023, farms contributed \$222.3 billion, or roughly 0.8 percent of the nation's GDP. Though that's a significant contribution in its own right, it only tells a small part of the role farms and farmers play in establishing a healthy national economy. Additional sectors, such as the food and beverage industry and textiles, apparel and leather products, rely on the agricultural sector to contribute

to their own success. Without a thriving agricultural sector, those industries would falter, thus creating a domino effect that could prove devastating to the nation's economy.

That link is why the BEA estimates the agricultural sector is an even bigger contributor to the nation's GDP than it may seem. Indeed, the BEA indicates the agricultural sector, in conjunction with food and related industries, contributed around \$1.54 trillion to the U.S. economy in 2023, a contribution that accounts for roughly 5.5 percent of the nation's GDP.